

Creative Super Plaster

Waterproof Fiber Reinforced Spacial Wall Plaster

DESCRIPTION

Creative Super Plaster is a waterproof, fiber-reinforced concrete (FRC) designed for spray application or traditional wall plastering.

SCOPE OF USE

Used for waterproof wall protection, surface repairs, sprayed concrete work, and durable fiber-reinforced plastering on brick wall/concrete and masonry.

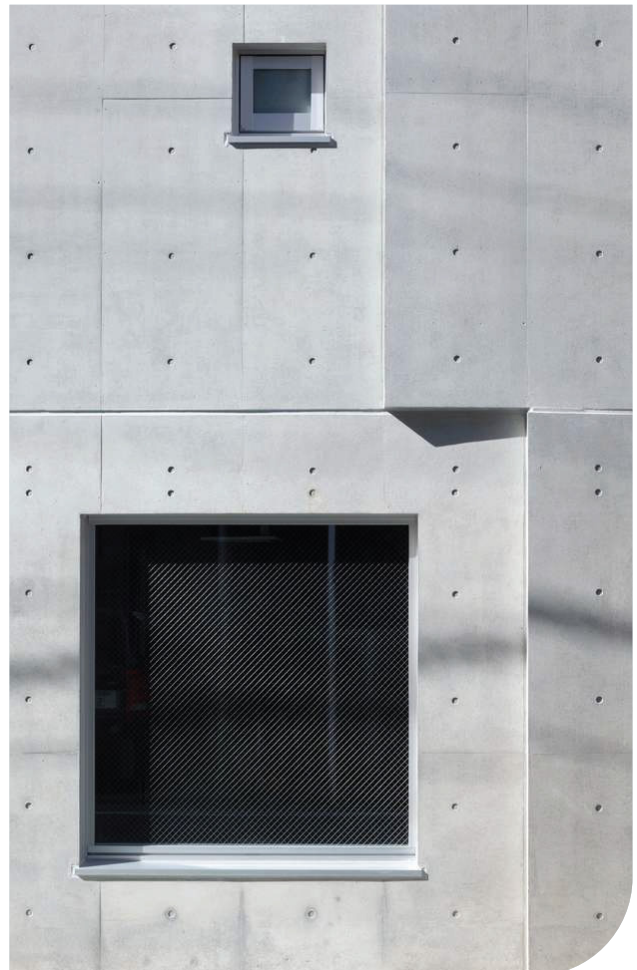


TECHNICAL DATA

Composition	Ordinary Portland Cement, hydrated lime, processed stone sand and chemical additives including cellulose fiber.
Binder	Ordinary Portland Cement
Aggregate Size	1-4 mm processed sand
Appearance	Light Grey colored granular powder
Mixing Ratio*	5-7 liters water per 25 kg bag
Approx. Yield/Coverage*	16 liters per 25 kg bag; 1.2 m ² per bag at 10 mm thickness
Density	Wet: 1.78 kg/ltr Dry: 1.65 kg/ltr
Compressive Strength*	13 N/mm ² @ 28 days
Flexural Strength*	5 N/mm ² @ 28 days
Curing	Minimum 48 hours by potable water
Working Time	Working Time: Approx. 30 minutes
Shelf life	12 months from date of production when stored under dry conditions

SPECIFICATION

BSEN998-1, BSEN13914-1, BSEN13914-2 & BS 5492



APPLICATION METHOD

BACKGROUND

Cementitious background is required for application of **Creative Super Plaster**. It can be apply on concrete, rough plaster, AAC block or concrete block surface. All elements that interfere with bonding must be removed from the background.

SURFACE PREPARATION

- Prior to application of **Creative Super Plaster**, a rough texture has to be created to period a mechanical bonding to the background surface. A mixture of cement, water, bonding agent and coarse sand can be sprinkled or spay over the background surface to make a rough texture.
- The prepared surface should be water cured for a period of 2 days (3-4 times daily) before applying **Creative Super Plaster**.

MIXING

- **Creative Super Plaster** supplied in 25 kg bags has to be mixed with clean water only, in a clean plastic bucket. To ensure a homogeneous and uniform mix, by using electric agitator.
- The amount of water to be added is 5-7 ltrs per 25 kg bag. Once mixed, allow to stand for 5 minutes and mix again before applying. Further water should not be added to the mix. Hard and set plaster should not be re-mixed or used.

APPLICATION

- Mixed **Creative Super Plaster** can be applied onto the prepared surface in one coat to a thickness of 8-10 mm and finished by felting or floating.

- If a plaster spray machine is used then the plaster is applied in a continuous operation and finished manually to the specified thickness to meet the requirements.
- Creative Chemical demonstration team will assist in these procedures upon request.

PACK SIZE

25 KG bag

SPECIAL REQUIREMENTS

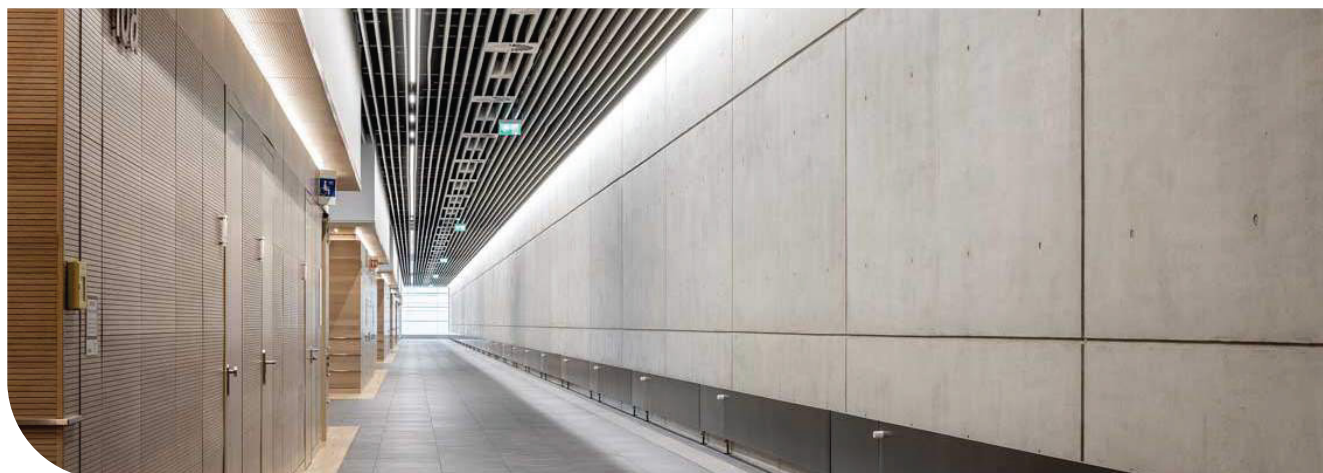
- The finished plaster has to be water cured for a period of 7 days (3-4 times daily).
- Avoid direct sunlight during application for reduce shrinkage cracks.
- Avoid direct sunlight for the first three days after application
- The background surface must be cementitious and good condition.
- If you are in doubt about the background surface, kindly contact Creative Chemical technical department for assistance.

STORAGE

Creative Super Plaster must be stored in a dry place, off the ground and well covered. Hard or lumpy material must be rejected.

TECHNICAL SERVICE

Creative Chemical Company technical services are available on request for onsite support to assist in the correct use of its products.



Creative Chemical Vietnam Co. Ltd.

No-15, Street-10A, Bien Hoa Industrial Zone 1, Bien Hoa City, Dong Nai, Vietnam
Phone: (+84) 251 8877 400, (+84) 61 3836 125, Email: info@creativechemical.net, Web: creativechemical.net

Creative Chemical products are produced with ISO 9001:2015 standard terms and conditions. So it's customer responsibility to maintain and follow up the TDS and weather forecast carefully. We can not guarantee the application and end use as it depends on various conditions and weather.